

PROJECT CARGO NEWS

PCN'S BI-MONTHLY NEWSLETTER

ISSUE 36 • JANUARY 2018

NEW MEMBERS THIS ISSUE

**WOKER FREIGHT
SERVICES (WFS):**
NAMIBIA

**LION SHIPPING
& CHARTERING:**
ROMANIA

**OFFSHORE
GLOBAL
LOGISTICS:**
KENYA

PCIT:
PAKISTAN &
AFGHANISTAN

**ALTUS
NORWAY:**
NORWAY

DC LOGISTICS:
BRAZIL

SUMMARY OF 7TH ANNUAL SUMMIT HELD IN PRAGUE

SEE PAGE 24 FOR DETAILS



**PROJECT
CARGO
NETWORK**

INSIDE

OILCARGO & M-STAR WITH TRANSPORT OF TRANSFORMER	03
C LOGISTICS SOLUTIONS & SCHRYVER HANDLE DISASSEMBLED 'CANTI-TRAVELLER'	03
WSS & SADLEIRS WITH TIME BOUND MOVEMENTS FROM AUSTRALIA TO THE UAE	03
FCI HANDLE SHIPMENTS TO IRAQ FOR OIL COMPANY	04
WFS IN NAMIBIA ARE SPECIFICALLY GEARED FOR LARGE PROJECT REQUIREMENTS	05
IMPRESSIVE PROJECT EXPERIENCE FROM ALTUS NORWAY	06
FIRST GLOBAL LOGISTICS WITH MOVEMENT FOR THE OIL & GAS INDUSTRY	07
TURK SUCCESSFULLY MOVE MARINE LOADING ARMS	07
LCL LOGISTIX HANDLE ODC MOVEMENT IN INDIA	07
PROJECT CARGO NETWORK RAISES \$4595 FOR THE RESCUE AT SEA APPEAL	08
CONCENTRATING ON PROJECT CARGO SOLUTIONS: LION SHIPPING & CHARTERING	09
CUCHI NEWS	10
ROCKIT TRANSPORT SERVICES AT CAIRO ICT 2017 EXHIBITION	11
MASSTRANS COMPLETE PROJECT MOVEMENT IN THE UAE	12
DELTA WITH TRANSPORT & INSTALLATION OF COMPRESSORS & GAS TURBINES	12
OLA HANDLE SHIPPING OF ANOTHER CRAWLER CRANE	12
INSIGHT	13
SCANDINAVIAN EXPRESS DELIVERS FOR TANA BRU PROJECT	14
PROCAM HANDLE EXCAVATORS FROM INDIA TO SYRIA	14
M-STAR DELIVER OIL FIELD EQUIPMENT IN OMAN	14
NUNNER NEWS	15
SPECIALISED IN PROJECT CARGO: PCIT IN PAKISTAN & AFGHANISTAN	16
C LOGISTICS HANDLE AID PROJECT IN THE CARIBBEAN	17
AL NAHRAIN NEWS	18
MEGALIFT MALAYSIA SHARE THEIR LATEST NEWSLETTER	19
BRASPORTO SHIP 3 CAT TRACTORS FROM BRAZIL TO AUSTRALIA	19
EXHIBITION COLLABORATIONS	19
CF&S NEWS	20
EUROPE CARGO & LCL LOGISTIX HANDLE SHIPMENT FROM BELGIUM TO INDIA	21
HLPFI ARTICLE ON OUR ONLINE TRAINING & HOW TO SIGN UP	21
EXG NEWS	22
SUMMARY OF 7TH ANNUAL SUMMIT HELD IN PRAGUE	24
2017 ANNUAL SUMMIT TWITTER COMPETITION ENTRIES!	25
ANNUAL SUMMIT 2018 COSTA RICA	26
WSS NEWS	27
INNOVATIVE & PROACTIVE SOLUTIONS AT OFFSHORE GLOBAL LOGISTICS	28
C.H. ROBINSON NEWS	30
24 YEARS OF PROJECT CARGO & HEAVY SHIPMENTS AT DC LOGISTICS	31

SEE YOU IN COSTA RICA! THE COUNTDOWN HAS BEGUN...
READ MORE ON PAGE 26



FROM THE PRESIDENT/C.E.O.



We hope that our first issue of the year marks a wonderful beginning to a happy, healthy 2018 for you.

It goes without saying how incredibly proud I am of our network and to have our 7th Annual Summit still so fresh in our minds (see pages 24 & 25) is fantastic.

During 2017, we warmly welcomed 45 companies to the PCN family, launched **pcntraining.com** (featured in the latest edition of HLPFI), started a new series of articles called "Insights" in our Digital Newsletters (see page 13), issued a new company video combining Member's footage with animation, initiated our Staff Exchange Program, strengthened ties with CMA CGM Project Cargo Division.

We raised \$4595 for the Rescue at Sea Appeal run by Save the Children, 88% of Members passed our strict Evidence Audit, held a fun Twitter Competition with over 90 entries (see page 25), our PCN News Service resulted in a mainstream media coup including CNN, Reuters, BBC, Bloomberg and ITV!

We also announced full details of our 8th Annual Summit in Costa Rica (see page 26) and more recently secured a rotating top leader-board Banner Ad on the Breakbulk website for 2018 and placed an eye catching advert in the inside front cover of HLPFI's 10th Anniversary Special Publication.

We could not be more excited about what's in store for PCN in 2018 and to continue working with all of you.

RACHEL HUMPHREY
President/C.E.O



WWW.PROJECTCARGONETWORK.COM

PROJECT CARGO NETWORK

PROJECT CARGO NETWORK is an ISO 9001 (Quality Management) and ISO 14001 (Environmental Management) certified organisation established in August 2010 to provide heavy lift and project cargo specialists access to a trusted, worldwide network of agents who could handle their specialist shipments, whilst working professionally and safely under a strict Code of Conduct.

PUBLISHER: Project Cargo Network
www.projectcargonetwork.com

CONTACT: headoffice@projectcargonetwork.com
Tel: + 44 2392 425204

COVER: 7th Annual Summit held in Prague
See p24 for details.
Photograph supplied by PCN.

PROJECT CARGO NETWORK cannot take responsibility for the opinions, statements and/or facts expressed in the stories, that are contained in this publication. Any views expressed are those of the individual quoted, and not necessarily those of the publisher. The publisher can accept no responsibility for any errors or omissions made, but will endeavour to amend any, that are brought to our attention, in a future issue.



OLICARGO & M-STAR WITH TRANSPORT OF TRANSFORMER

During October, PCN partners, OliCargo and M-Star Freight Services successfully transported a transformer from Portugal to Rotterdam in the Netherlands with a final destination of Iceland.

The transformer was made up of 3 units of 53tns each (pictured below) and the maritime transport was a distance of around 1,550km. The chartered sole cargo vessel took the shipment from Portugal to Rotterdam where a free alongside ship operation was carried out, using a barge to perform the Rotterdam terminal change to allow the merchandise to embark on the journey to its final destination.

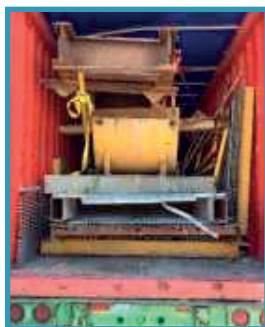
João Ribeiro of the Cargo Projects Department at OliCargo concludes:

"You can trust us with any special projects!

Contact us for a consultation – project.cargo@olicargo.com."

Another 100% successful operation concluded by OliCargo and M-Star Freight Services to add to their impressive portfolios!

www.olicargo.pt, www.mstarfreight.com



C LOGISTICS SOLUTIONS & SCHRYVER HANDLE DISASSEMBLED 'CANTI-TRAVELLER'

C Logistics Solutions (members in the Dominican Republic) have recently combined with their PCN partner, Schryver del Ecuador to handle a disassembled 'canti-traveller' at 650mt / 2,000m3.

Alex Booth of C Logistics Solutions explains: "What is a canti-travel? Well, some of our team didn't know either! But thanks to some serious surfing with Google, we found it is basically a structure for piledriving the support columns of a pier (which we also handled from under hook to the job site) and the laying of pier's cement floor."

The scope of work included:

- Classifying, sorting & preparing the cargo for shipment at the Punta Catalina Thermoelectric Project site in the Dominican Republic
- Loading, stowage, counting, lashing & securing of 35 x 40'FRs & OTs and delivery to the port of embarkation in the Dominican Republic
- Receiving the cargo at Guayaquil in Ecuador, customs clearance and delivery to the DP World Multi-Purpose Port Project at Posorja being constructed by the China Harbour Engineer Company (CHEC)

Alex continues: "What was estimated to be a 2-week job was severely impaired due to the arrivals of hurricanes Irma and Maria, which interrupted our operations and put us back extensively, not only due to the storms but also the muddy ground conditions after their passing and the subsequent tropical rain storms caused some days when it was impossible to work. Thus, the job took over a month!"

"To make things even more 'interesting', as neither the shipper nor the consignee knew the weights or dimensions of the cargo with any exactitude, we had to physically measure the pieces to confirm they came within container configurations and employ an oxyethylene crew to cut the OOG pieces to size. Weight was also a challenge as there were pieces ranging between 18-24mtns so in order to meet the road weight restrictions in Ecuador, we limited our container loadings."

"As part of the same canti-traveller project, we also supervised the return loading and shipping to Brazil of the 33mt hydraulic jack hammer and its ancillary equipment & systems."

www.clssa.net
www.schryver.com



WSS & SADLEIRS WITH TIME BOUND MOVEMENTS FROM AUSTRALIA TO THE UAE

Wilhelmsen Ships Service (WSS) in the UAE and Sadleirs Global Logistics in Australia have recently handled the time bound movements of air cool chillers from Sydney to Jebel Ali.

The two shipments consisted of 4 air cooled chiller AC units with 2 at 6,300kgs / 5.05 x 4.10 x 2.90m and 2 at 3,200kgs / 2.60 x 2.80 x 3.00m.

The scope of work included:

- Receiving cargo at Sydney warehouse
- Loading, lashing and securing cargo on flat-rack containers
- Marine survey of the operation
- Export customs clearance at Sydney Port
- Sea freight from Sydney Port to Jebel Ali Port via 20' & 40'FR

The WSS & Sadleirs teams ensured a proper coordination between all parties for the timely movement of both shipments. WSS is now preferred by the client to work on their other project cargo.

www.wilhelmsen.com
www.sadleirs.com.au



FCI HANDLE SHIPMENTS TO IRAQ FOR OIL COMPANY

France Cargo International (FCI) have been specialising in project cargo and heavy lift for over 25 years. They have recently handled a project involving several jobs shipped to the Middle East.

The shipments were for an oil company and destined for Iraq from Fos-sur-Mer in France. The oversized cargo was loaded onto flat-racks and consisted of a dehydrator and degasser at 22tns and a compressor at 50tns as well as other equipment.

FCI have been valued PCN members since 2012.

www.fci-cie.com



DISRUPTION, INNOVATION, BATTLE OF THE LAST MILE
颠覆、创新、决战最后一公里

最后一公里国际峰会

LAST MILE 2018

17-18 January 2018, Shanghai China
2018年1月17-18日, 中国上海

The New Business & Social Networking Platform Brings Together Global Retailers, eCommerce, Warehousing, Fulfillment Centers, Logistics and Delivery Companies
Aiming to Create a Seamless Last Mile Ecosystem. 全球零售商、电商、仓储中心、物流与配送企业共同打造的最后一公里生态系统全球商业及社交平台

More details call +86-21-60126590 or email to mkt@jwconsulting.cn.

YUMMY
CHINA 2018

17-18 January 2018, Shanghai China
Where Food & Beverage Industrial Disruptors and Innovators Meet and Do Business.

CREATING SOLID FOUNDATIONS FOR LONG TERM BUSINESS DEVELOPMENT

EXHIBIT ONLY
@

compack
COMPLETE PACKAGING EXPO

14 - 16 JUNE 2018
CHENNAI TRADE CENTRE | CHENNAI | INDIA

FOR SPACE BOOKING CONTACT
Vivekanandhan D: +91 96000 95109
compackexpo@smartexpois.in www.compactexpo.com

Media Partner
UFO PROBIT CARGO NETWORK CARGO Connections freightbox

Organized by:
Smart Expos & Fairs (India) Pvt. Ltd.
No. 116, Manickam Lane, Mount Road,
Guindy, Chennai-52, INDIA
Phone: +91 (44) 2250 1985 / 86 / 87



We are pleased to announce representation in Namibia with Woker Freight Services (WFS). Based close to the port in Walvis Bay, they also have offices in Windhoek and Lüderitz with a highly competent staff of over 70 people.

Mr. Kirsten Beeker (Manager of Marine, Mining & Energy) states: "Woker Freight Services is one of the oldest logistics companies in Southern Africa. Our company was established in 1924 and has since then distinguished itself as a leader in freight logistics management. WFS offers global freight solutions, specialised

supply chain and logistic services for local, regional and international clients. We are passionate about freight logistics and we firmly believe in a solution driven approach to the most challenging freight requirements.

WFS is specifically geared for large project consignment freight requirements. This includes the full cycle of logistics involved in project management including shipping, cargo handling, customs clearing, forwarding (intermodal transport) and warehousing. We also have access to specialised logistics and marine services aimed at enhancing our freight logistics service portfolio as well as bonded and normal warehouse facilities, containerisation, ships agency and stevedoring services. Another speciality of WFS is in-transit clearances including road bond facilities to Zambia, Angola, Botswana, Zimbabwe and the Democratic Republic of the Congo.

With preferential contractual rates and agreements in place with the major shipping lines allowing for flexible price negotiations,

we offer complete assistance on project and abnormal freight. We handle a substantial volume of cargo comprising any type, size or mode including heavy lift, project cargo, breakbulk, bulk or hazardous cargo."

"WFS removes the nightmare of dealing with vast array of procedures and documentation, by providing a one-stop-shop solution to any import or export challenge."

Photographed is the importation of Komatsu 960 dump trucks shipped by WFS from Houston in the USA to Walvis Bay, Namibia. WFS were involved in the complete logistics from Houston to the mine site in Namibia. The shipments were handled in batches of 3 dump trucks at a time.

Please also visit the online version of this story, for links to some other project work from WFS, including:

- Fire Trucks to Zambia
- Chemical Train Wagon from China
- Freightliner Trucks to Zambia

WFS IN NAMIBIA ARE SPECIFICALLY GEARED FOR LARGE PROJECT REQUIREMENTS

www.wfs.com.na



IMPRESSIVE PROJECT EXPERIENCE FROM ALTUS NORWAY

We are pleased to welcome Altus Norway AS as new members. With offices in Moss, the company offer an extensive range of services including complete project logistics, marine logistics and terminal management.

Commercial Manager at Altus Norway, Reidar Evensen recently attended the 2017 Annual Summit that took place in Prague on 19-21 November.

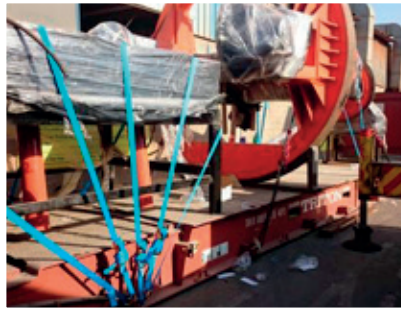
Altus was originally 100% focused on the oil & gas industry but has since diversified to a wide range of other industries.

Reidar comments: "Altus Norway is independently owned and works with clients with global markets and operations. Joining PCN will ensure we have the right network of quality, specialised partners across the world. Additionally, by providing our fellow members with expert

services, we hope to mutually increase traffic and business for any requirements in Norway."

Please visit the online version of this story to download a presentation of some of Altus Norway's impressive project experience.





FIRST GLOBAL LOGISTICS WITH MOVEMENT FOR THE OIL & GAS INDUSTRY

First Global Logistics has recently moved oil and gas accessories and units from the supplier's door in Cairo, Egypt to Alger Port in Algeria for their client's site preparation. 16 OOG units including steam boilers, gear motors, large tanks, pipes and pumps accessories were transported for PMICO, one of the leading global providers for oil and gas, engineering construction, heavy industry units and accessories.

- **Client:** PMICO Heavy Industries
- **Quantity:** 16 Units
- **Mode of Transport:** FCL Sea
- **Carrier:** Maersk & Messina
- **Equipment Used:** 6 x 40'FR OOG, 1 x 40'OT OOG & 4 x 40'HC
- **Total Gross Weight:** 218tns
- **Total Volume:** 390m3

The First Global Logistics team's scope of work included:

- Cargo survey at the shipper's site to determine the mode of transport, exact cargo weight & dimensions and the number & type of containers required
- Loading, lashing & stuffing cargo on 40'FR and inside 40'OT & HC containers
- Trucking from Cairo site to Alexandria Port using 4 low-bed trailers & 2 normal fleet-beds
- Discharging at the carrier terminal, port handling and customs clearance
- Shipping using Maersk lines from Alexandria Port to Alger Port, Algeria.

First Global Logistics have been dependable PCN members in Egypt since 2012.

www.firstgloballogistics.com

TURK SUCCESSFULLY MOVE MARINE LOADING ARMS

The Turk Heavy Transport team has recently completed the successful transportation of 2 units of marine loading arms from Khalifa Bin Salman Port to Gulf Petrochemical Industries in Bahrain.

Each marine loading arm weighed 33.7tns with dimensions of 26.20 x 2.87 x 3.52m. Turk Heavy Transport were responsible for the survey, permissions, escorts & transportation.

This movement is another example of the reliability and safety offered by Turk Heavy Transport for any kind of heavy lift and oversized projects. The company are founding PCN members in Bahrain.

www.turktransport.biz

LCL LOGISTIX HANDLE ODC MOVEMENT IN INDIA

LCL Logistix are members in India and have recently handled the domestic transportation of the ODC cargo, photographed here, from Ambarnath (Maharashtra) to Bina (Madhya Pradesh).

The company's extensive experience and expertise ensured the seamless movement of the cargo from the origin to destination safely and efficiently. LCL Logistix is an integrated logistics and supply chain solution provider offering a comprehensive range of services.

"LCL Logistix is a global and local player with a wide reach across the length and breadth of the country. Saddled with loads of experience and expertise with an efficient team, we optimise the

services in our varied portfolio.

We follow stringent standard operating procedures (SoPs) that begin with detailed project planning, in-house research and scheduling, along with conducting feasibility studies and process controls. The entire exercise is transparent with the consignee involved at every stage, receiving real time progress updates at regular intervals. Our stringent process control is dynamic and equipped with excellent tracking mechanisms (location trackers and positioning systems) which prepares us to execute project plans with ease."

www.lcllogistix.com





PHOTO CREDIT: MIYA TAJIMA-SIMPSON/SAVE THE CHILDREN



PROJECT CARGO NETWORK RAISES \$4595 FOR THE RESCUE AT SEA APPEAL

During the registration process for our 2017 Annual Summit, funds were raised for the Rescue at Sea Appeal run by Save the Children. The Search and Rescue operation was featured on the BBC recently.

An additional donation by Special Guests, HLPFI and a very generous gesture by our Twitter Competition winner, Patrick Lo of Canaan Shipping whereby he kindly

donated his 1st prize of an Annual Fee (worth \$1400) to our fundraising campaign brought our total to \$4595.

The donation will help towards working with child refugees around the world - from Lebanon to Jordan, Greece to Finland. Keeping children warm by providing warm clothes, blankets and fuel for heating. The charity also distribute food, water, blankets

and tents to refugee families.

Rachel Humphrey, CEO of PCN said: "Every year our Members raise funds for charity and it is important that we carefully select the recipient each year as we really want our money to make a difference. We are aware that many agencies and projects survive through charitable donations and they can't help others without people helping them."

SMi Group Proudly Presents the 3rd Annual Conference:

DEFENCE LOGISTICS CENTRAL & EASTERN EUROPE

6TH - 7TH
MARCH
2018

Hotel Angelo, Prague
Czech Republic

SMi www.defence-logistics.eu

2018 12th WORLD CARGO SYMPOSIUM

MARCH 13-15 | DALLAS, TEXAS

Join us in Dallas for the 12th World Cargo Symposium!

The World Cargo Symposium is the largest and most prestigious annual air cargo event; each year it attracts more than 1,100 innovative and well-informed key stakeholders, throughout the industry supply chain, to collaborate and debate key issues.

We look forward to welcoming you to Dallas, a city well known for its commercial and cultural flare and the perfect place to inspire big thinking and usher in creative ideas for the future of air cargo. Don't miss it!

Where:	Hilton Anatole
When:	13-15 March 2018
Where:	Dallas, Texas - USA
Audience:	Open to all

REGISTER TODAY!

For more information and to register, visit: www.iata.org/wcs

IATA



We are pleased to introduce Lion Shipping & Chartering Ltd as new members in Romania. Located in Constanta, the company were recommended by current PCN members during their application.

Managing Director, Mr. Dragos Vieru: "Lion Shipping & Chartering was established in 2007 in Constanta with the core activity of shipping solutions for the project cargo & heavy lift market. We are certified by Bureau Veritas covering all processes deployed for ship agency services & freight forwarding according to following standards: ISO 9001:2008 – Quality Management System; ISO 14001:2004 – Environmental Management System; OHSAS 18001:2007 – Occupational Health & Safety Management System; and ISO/IEC 27001:2013 – Information Security Management System.

We supply port agency and forwarding services in the ports of Medgidia, Basarabi, Midia, Constanta and Mangalia and our team offers full, tailored solutions for project and heavy lift logistics from initial planning to the final delivery and facility start up."

Please visit the online version of this story for photos and details of the numerous successful projects handled by Lion Shipping & Chartering and for a link to some great videos of their work.

CONCENTRATING ON PROJECT CARGO SOLUTIONS: LION SHIPPING & CHARTERING

THE COMPANY'S MAIN SERVICES INCLUDE:

- Project Cargo, Heavy Lift & Breakbulk Cargo
- Road Transport for OOG & Heavy Lift
- Cargo Survey, Lashing & Securing
- Dry Cargo Chartering
- River Barging by Danube, Rhine & Maine
- Ship Agency & Port Services
- Ship Brokering
- Freight Forwarding

Project cargo and heavy lift shipping solutions for international and local customers remains the core activity of Lion Shipping & Chartering with their team focused on industries such as:

- Oil & Gas
- Energy
- Power Generation
- Mining Projects
- Construction
- Infrastructure Projects
- Military & Dangerous Goods including Class 1 (Registered with NSPA)



CUCHI WITH TRANSPORTATION OF STEAM TURBINE & GENERATOR

Recently, Cuchi Shipping in Vietnam have handled the transportation of a steam turbine and generator from Saigon Port to the client's sugar cane factory. The project is photographed here. After arranging and supervising the transportation, Cuchi Shipping also arranged the positioning of the cargo at the factory site.

The cargo totalled 136,250kgs and consisted of 14 wooden packages and containers including two oversized pieces (steam turbine and generator) as follows:

- 7.54 x 5.31 x 4.01m - 69,000kgs
- 6.20 x 4.40 x 2.70m - 46,000kgs

Cuchi Shipping have been strong PCN members in Vietnam since 2010 offering a dedicated project cargo department with a wide coverage of offices in the country.

www.cuchishipping.com.vn

CUCHI WITH TRANSPORT OF HEAT EXCHANGER COLD BOXES



During October, Cuchi Shipping in Vietnam arranged and supervised the transportation and loading of heat exchanger cold boxes and accessories destined for India.

The cargo was transported from the factory to Saigon Port where it was loaded onto the vessel sailing to Chennai in India.

The heat exchanger cold boxes measured as follows:

- 27.22 x 3.68 x 3.75m / 57,700kg
- 11.45 x 5.18 x 3.80m / 45,000kg

Cuchi Shipping have over 20 years experience and their dynamic and well-trained project team offer a complete range of services.



CUCHI HANDLE OVER-LENGTH CARGO IN VIETNAM

Members in Vietnam since 2010, Cuchi Shipping have transported the over-length cargo pictured, from the factory to Saigon Newport and handled the loading onto a container vessel for sailing to Busan in South Korea.

The cargo of a catwalk support frame had dimensions of 23.0 x 2.8 x 2.1m and weighed 21,810kg.

CEO & President of Cuchi Shipping, David Tuan Nguyen comments: "Our solution to ship this long piece of cargo was to use 10 x 40'FR to make a suitably sized flatbed on the OOCL container vessel".



CUCHI WITH TRANSPORTATION OF EXCAVATORS

The dedicated project cargo team at Cuchi Shipping in Vietnam have the expertise to offer a complete range of services for many different jobs. They have just finished the transportation of 7 excavators from Shanghai Port in China to Laos via Vung Ang Port in Vietnam.

The 7 Caterpillar hydraulic excavators (Model: 374FL) plus parts totalled 521,248kgs in 56 pieces. The cargo was loaded at Shanghai Port, making the journey to Vung Ang Port in Vietnam where it was discharged and loaded onto trucks for the transport to Laos.

After customs clearance at the Vietnam-Laos border, Cuchi Shipping successfully and safely delivered the shipment to the site in Laos.

www.cuchishipping.com.vn

26-28 March 2018
Shanghai World Expo
Exhibition and Convention Center

**ASIA'S LARGEST EVENT FOR
THE PROJECT CARGO AND
BREAKBULK INDUSTRY.**

Break^{CHINA}bulk

To exhibit, sponsor and register, visit
www.breakbulk.com/bbch2018

ROCKIT TRANSPORT SERVICES AT CAIRO ICT 2017 EXHIBITION

Recently, Rockit Transport Services (members in Egypt) participated in the famous summit and exhibition, Cairo ICT 2017.

As well as participating as an exhibitor, Rockit also arranged the shipping by both air and ocean, clearance and transportation for the oversized and heavy security equipment displayed in the exhibition imported from Europe and other countries worldwide for many governmental firms in Egypt.

Logistics Manager, Mr. Mohamed A. El Hady comments: "Rockit's participation as an exhibitor in this event with our own booth meant we could be beside our clients to follow up their demands and to secure new business through other international companies at the same exhibition. Rockit Transport Services were the only freight forwarder exhibiting at the big international event in Cairo which was held under the patronage of Egyptian President, Mr. Abdel Fattah el-Sisi."

Photos from the Rockit stand at Cairo ICT 2017 are shown here.

www.rockit.com.eg





MASSTRANS COMPLETE PROJECT MOVEMENT IN THE UAE

Masstrans Freight are members in the UAE are they are delighted to share the below photos of a recently completed project cargo movement from Hamriyah Free Zone in Sharjah.

The cargo (a TEG contactor) consisted of 3

ODC packages plus accessories totalling 1033ft. Masstrans scope of work included collection from the factory on FOT basis, cargo measurement surveys, route survey, Free Zone permissions, road permissions, transportation and the positioning of the

ODC packages on stools alongside the vessel at Hamriyah Port.

Masstrans successfully delivered their expert services to the satisfaction of their client.

www.masstransfreight.com



DELTA WITH TRANSPORT & INSTALLATION OF COMPRESSORS & GAS TURBINES

Delta Maritime have handled the transport and installation of Siemens turbo compressors and gas turbines in Northern Greece at the Evros Kipoi TAP Compressing Station.

The cargo consisted of 3 gas turbines (each at 36tns / 7.80 x 3.05 x 4.15m) and 3 compressors (each at 26.7tns / 6.20 x 3.68 x 3.94m) plus accessories with a CIF cargo value of €20,000,000. Delta Maritime took immediate receipt of the sensitive cargo at the Port of Piraeus and expertly handled the direct reloading from Mafis onto trucks with the use of a 160tn private shore crane.

Customs formalities for the valuable cargo was completed on the same day as its arrival in port before the on-carriage began in separate convoys using special low-beds trailers and escort cars passing the difficult and narrow roads close to the site.

The turbo compressors, gas turbines and accessories arrived at the Evros Kipoi TAP Compressing Station site where a 500tn shore crane, 5tn forklift and a hi-up crane waited to lift the cargo from the trucks. After the safe delivery, Delta Maritime's dedicated and experienced team then successfully installed the complete cargo on their foundations.

Athena Mailà of the Delta Maritime Customer Service Department comments: "Within November, an additional lot of 3 oil cooling units (at 10.7tns / 6.35 x 2.50 x 3.99m each) is scheduled to be delivered and installed at the same site."

www.delta-maritime.net



OLA HANDLE SHIPPING OF ANOTHER CRAWLER CRANE

OLA Groups Logistics are members in Hong Kong and have recently arranged the breakbulk shipping of a crawler crane (QUY650) to Malaysia.

The crawler crane was shipped in 108 pieces with a gross weight of 1,940mt.

Lane Zhu at OLA Groups Logistics states: "This crawler crane, with its maximum lifting capacity of 650tns, is the biggest crane that China has ever exported to Southeast Asia! It will be used for the Kuala Lumpur Metro Project in Malaysia. Before loading, we discussed with the C/O, port captain, foreman, and lashing foreman regarding stowage, dunnage, lashing plans to safely secure the cargo.

All the cargo was transported to the ship's side by trailer before directly loading the main engine, two caterpillar bands and other pieces using 2 ship cranes and 1 shore crane with 4 steel lifting lines."

www.olagroups.com

INSIGHT.



MARCO J. VAN DAAL

THE "INSIGHT" ARTICLES ARE ALL GEARED TOWARDS EXPLAINING SEEMINGLY COMPLEX MATTERS IN SIMPLE TERMS.

Marco J. van Daal has been in the heavy lift & transport industry since 1993 starting with Mammoet Transport from the Netherlands and later with Fagioli PSC from Italy, both esteemed companies and leading authorities in the industry. His 20 year plus experience extends to 5 continents and over 55 countries and has resulted in a best selling book "The Art of Heavy Transport" which is available at www.the-works-int.com.

Marco has a real passion for sharing knowledge and experience, the prime reason for his frequently held seminars all over the world. He currently resides in Aruba, Dutch Caribbean, with his wife and two daughters.

GALILEO GALILEI

The previous article explained gravity, where it originates from (the dense matter at the core of a planet such as our planet Earth), and that it interacts with objects on our planet and even with other planets. The closest interaction with another planet that we, on Earth, can witness is with the moon.

NOTE: From a theoretical point of view, the moon is not a planet. By definition, a planet orbits a star, like Earth orbits our sun, while a moon orbits a planet.

There is a continuous interaction between Earth and the moon. This interaction takes place in the shape of gravity that we discussed in the previous article. The gravity forces between the Earth and the moon are the reason that the moon orbits the Earth and does not "wander off" into space. The moon's gravity acts on Earth and the Earth's gravity acts on the moon. These two gravitational forces keep a more or less constant distance between them.

This discovery, although uttered and suspected by a number of scientists before him, is large contributed to Galileo as he made it "main stream" and announced it publicly that the Earth is not flat but round. He was jailed for this announcement for a substantial portion of his life as it interfered with religious beliefs at the time.

As each planet has its own gravity, each planet has its own "Center of Gravity". See Figure 1. The red and white round mark is the symbol for the Center of Gravity.

It is the gravitational force of the moon on Earth that counteracts the gravitational force of the Earth on any object on the Earth's surface. This results in a slight reduction of gravitational pull towards the center of Earth. This reduction is however so small that in daily life we do not notice this. There is no risk that suddenly you will start floating in mid-air due to the moon's gravitation forces on you. However, for fluids, such as the oceans and seas, it does make a difference and these fluid move towards the areas with the lower gravitational pull. Hence we end up with a high tide on Earth as the side where the moon is. See Figure 2.

This explains why there is a high tide on Earth at the side where the moon is. But how do we explain the high tide that takes place simultaneously at the opposite side from

where the moon is. See Figure 3. There is no moon on that side of Earth that can cause a reduction in the gravitational pull that, in turn, can cause a high tide. So where is this high tide coming from.

To understand this second high tide we have to view the Earth and the moon as a combined system that orbits the sun. And while this combined system is orbiting the sun it also orbits itself. Any object that either orbits another object or orbits itself is subject to centrifugal forces. Centrifugal forces are the forces that want to push you outwards when you drive your car around a corner. These centrifugal forces are the cause of the second high tide on the opposite side of the Earth where there is no moon.

As the Earth orbits its own axis every 24 hours we experience a first high tide at the side where the moon is, use Figure 3 for this. Let's assume that this high tide appears at midnight, at time 00:00. At 06:00 we would experience a low tide. At noon, or 12:00, there is another high tide (on the opposite side from the moon). At 18:00 there is a low tide and at midnight we are back at the high tide where we started 24 hours ago.

If the moon would not orbit the Earth, this is exactly what our tides would look like, a high tide every 12 hours. But those of us that have been involved in maritime operations or load-outs/ins know that high tide occurs on a different time every day. This is caused by the moon orbiting the Earth. It takes the moon 27.3 days to orbit Earth. Both the moon and Earth orbit in the same direction.

12 hours after the last high tide (when we would experience the next high tide if the moon would not orbit Earth) the moon has moved 6.6°. It takes Earth another 26 minutes to reach the next high tide. Therefore the time between high tides is 12 hours – 26 minutes.

NOTE: For the mathematician amongst us, the 6.6° can be calculated. It takes the moon 27.3 days for the moon to orbit Earth, this is 360°. Also 27.3 days are 655.2 hours. In 12 hours the moon has moved $((12/655.2) \times 360^\circ) = 6.6^\circ$

NOTE: The 26 minutes can be calculated as well. Earth orbits its own axis every 24 hours or 1,440 minutes.

For Earth to orbit another 6.6° it takes $((6.6^\circ/360^\circ) \times 1,440) = 26.4$ minutes.

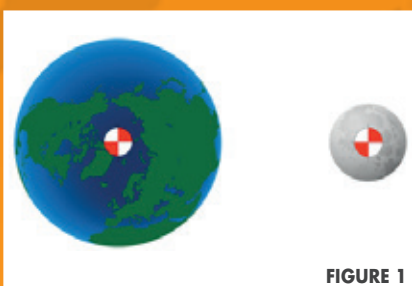


FIGURE 1

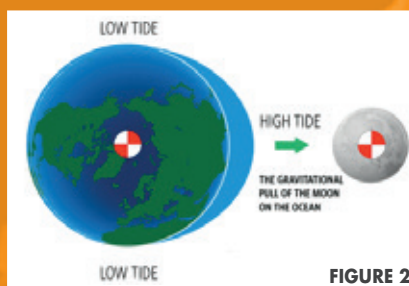


FIGURE 2

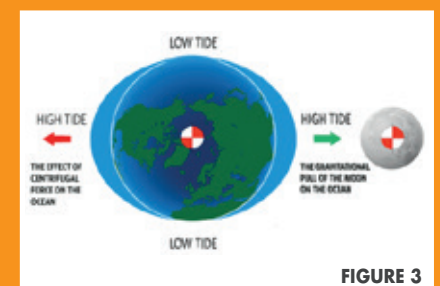


FIGURE 3

SCANDINAVIAN EXPRESS DELIVERS FOR TANA BRU PROJECT



Polish members, Scandinavian Express have recently taken part in the Tana Bru Project, providing delivery of an oversized steel element in winter conditions for the road bridge construction.

The cargo was handled from Gdynia in Poland to a remote, northern part of Norway, beyond the arctic circle. The transported element had dimensions of 21.5 x 20.5 x 20.0 with a weight of almost 100tns and was transported using the company's own special truck and trailer.

The new bridge will be 260m long and is due to be completed in September 2019. Check out these photos of the transportation as well as a visualisation of the completed bridge.



www.scandinavianexpress.com

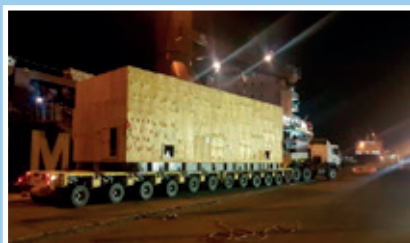


PROCAM HANDLE EXCAVATORS FROM INDIA TO SYRIA

Procam Logistics have been trustworthy members in India since 2012. The company has recently handled a project for a mining and construction company in India involving the movement of 10 heavy and over-dimensional excavators and their accessories from Chennai Port to Latakia Port, Syria.

Each excavator weighed over 27mt and was loaded onto 40' flat-racks at Chennai Port using suitable lashing and securing materials as pictured below. The 10 excavators were moved in two shipments of 5 each. The overall dimensions of each unit when loaded was 10.0 x 4.3 x 3.4m. As the shipment was time bound, Procam ensured the timely custom clearance and stuffing activities at Chennai Port to meet the client's delivery requirements.

www.procamlogistics.com



M-STAR DELIVER OIL FIELD EQUIPMENT IN OMAN

M-Star Freight Services have successfully handled the delivery of equipment for the extension project to the Safah Oil Field in Oman.

A total of approximately 8,500cbm of compressors, coolers, e-house, generators and parts were transported from the Netherlands, USA, Belgium, Spain and the UK. The loading work in the USA was performed in Houston after facing the Hurricane Harvey disaster. Whilst the site in Oman is located in the dry desert around 478km from Sohar Port.

The major parts weighed up to 80tns with the oversize units measuring up to 16.3 x

4.3 x 4.8m. The scope of services included:

- Transportation from suppliers by standard & multi-axle trucks
- Port handling & shipment on heavy lift vessels
- Receiving, consolidation & shipping various parts in containers
- Full documentation including CVO, EUR-1, road permits & escorts

Please check out these photos of the operations. M-Star Freight Services in the Netherlands can be contacted on sales@mstarfreight.com.

www.mstarfreight.com



NUNNER LOGISTICS: NOBODY GOES FURTHER!

Members in the Netherlands, Nunner Logistics have recently launched their new website as well as changed their company slogan to fit more in line with their fast growth and customer expectations. CEO, Erwin Cootjans explains below.

"Although Nunner Logistics already had a great website as far as content and design was concerned, there was room for improvement. It was necessary to make the website more interactive, calling for action and more inviting to return for a next visit.

Therefore, we have made a completely new structure and I am happy to say that the result is great. Although the content is partly the same, it is now grouped completely different. It will give us the

opportunity to measure and to get more information about our visitors and their behaviour etc. Since our launch, the feedback has been very positive.

Please take a look!

www.nunner-logistics.com

We also have a new company slogan! Where our previous slogan, 'Our name is a promise' was perfect for the first years after the return of the Nunner brand to the market, it is now time for something new.

**Our new slogan is:
'NOBODY GOES FURTHER'**

This can be used in a lot of contexts and it will be visible on all our communication.

- It means that we go to the end of the world (Chile, New Zealand, Mongolia)

for our customers

- It means that nobody goes further in finding solutions for logistical problems
- It means that nobody goes further in delivering service
- It means that nobody goes further in corporate social responsibility
- It means that nobody goes further in optimising IT solutions."



THE SILK ROAD: NUNNER LOGISTICS KNOW THE WAY!

www.nunner-logistics.com

Nunner Logistics (members in the Netherlands) have been working the silk road since the early 1990's and can reliably handle any requirements for the service.

Managing Director, Erwin Cootjans: "The new silk road is a hot item and the rail connection between Europe and China is in the spotlight. Having been on this 'road' since the early 1990's, Nunner Logistics are active and present with our own footprint on all the routes, north and south.

A dedicated and cost-effective service, it takes half the time of ocean freight and is a sixth of the cost of airfreight. The Nunner silk road service delivers valuable freight from China to Western Europe fast and economically. The connection is firmly established and we offer FCL and LCL services with several weekly departures.

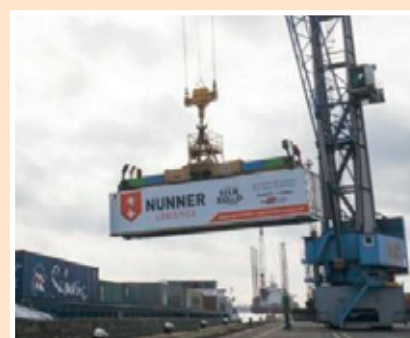
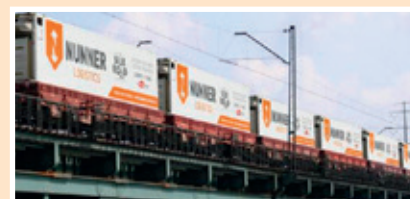
The silk road – we know the way! The

advantages of our China train service are:

- Cheaper than air & faster than ocean
- Fast & stable terminal-to-terminal lead time
- Flexibility of last mile delivery
- Standard equipment 40ft (high cube)
- Daily position updates
- Sustainable & eco-friendly way of transportation
- Several departures per week
- Pro-active communication on shipment statuses."

"Because nobody goes further in supplying expert knowledge and value for money, please contact us with any challenge – We are happy to help you!"

Shown above is a map showing Nunner's silk road service routes.





SPECIALISED IN PROJECT CARGO: PCIT IN PAKISTAN & AFGHANISTAN

We are pleased to report Project Cargo & International Transportation Co (PCIT) are new members in Pakistan and Afghanistan. Their offices are located in Karachi and Kabul and the company offer a complete range of project cargo and heavy lift handling services. Managing Director, Mr. Rajab Ali states they are becoming a member: "...as we are specialised in project cargo and are keen to become a dynamic part of the network. We believe the strong platform of PCN will improve our reach and enhance our services."

Rajab continues: "The Project Cargo & International Transportation Co business philosophy is based on total responsibility, accountability and performance. Our commitment is to provide cost-effective, on time and reliable logistics solutions and transportation."

PCIT offers worldwide project logistics management solutions including overland, ocean and air transportation. Such projects have included the movement of entire oil rigs, construction material, earth moving equipment, power & coal plant projects to mention just a few. Our team of highly-experienced project management personnel oversees every aspect of these complex movements including coordination with multiple vendors and supply sources and multiple points of origin. Our specialised teams are present at every job site to ensure the professional handling of each unit of cargo to be moved. Clients receive thorough and competitive cost analysis, transportation feasibility studies, comprehensive logistics plans, site surveys and the consolidation of specific cargo for added cost savings."

"We specialise in the handling of oversized and heavy lift cargo which require extensive planning and thorough insight."

Some of the many recent projects handled by PCIT include:

- A complete used asphalt plant from China
- Loading & barge transportation for the LNG jetty
- Concrete pump from Shanghai Port
- A current export shipment of 45tns

www.project-cargo.com.pk





17



AL NAHRIN DELIVERS CARGO FOR OIL EXPLORATION COMPANY IN IRAQ

Al Nahrain (members in Jordan and Iraq) have recently delivered cargo for an oil exploration company and the Ministry of Oil. The cargo of 8 heavy drill rig units weighing 13tns each, a water tanker and 9 cases of spare parts was picked up at Umm Qasr Port in Iraq and delivered to the oil exploration company in Baghdad.

The Al Nahrain team swiftly and successfully completed all requirements needed for the transportation from Umm Qasr Port to the final destination in Baghdad City. Their escort patrol accompanied the shipment and handed over all units safely and as received from the vessel.

Ragheb S. Banat (Director of Operation & Logistics Services at Al Nahrain) comments: "These type of heavy vehicles required special low-beds plus one truck for the spare parts. To ensure the secure and safe cargo delivery, our qualified drivers and technical team applied suitable lashing materials accordingly. During the trip from the port to final destination, the convoy was followed up persistently and continuously to supply all parties with on-the-spot reports."

www.nahrainco.com.jo



AL NAHRIN WITH 1ST LOT OF TELECOMMUNICATION TOWERS

During October, Al Nahrain in Iraq carried out the transportation of the first lot of telecommunication towers for a project contracted by Al-Atheer Company for Communications and Zain Group.

Once assembled, the telecommunications towers are equipped with wheeled cabinets meaning they can be towed. This first lot involved 5 towers, each at 9,200kgs / 60cbm, which were picked up at Umm Qasr Port and transported to the consignee's warehouses in several Iraqi Governorates; Basra, Karbala, Baghdad and Kirkuk.

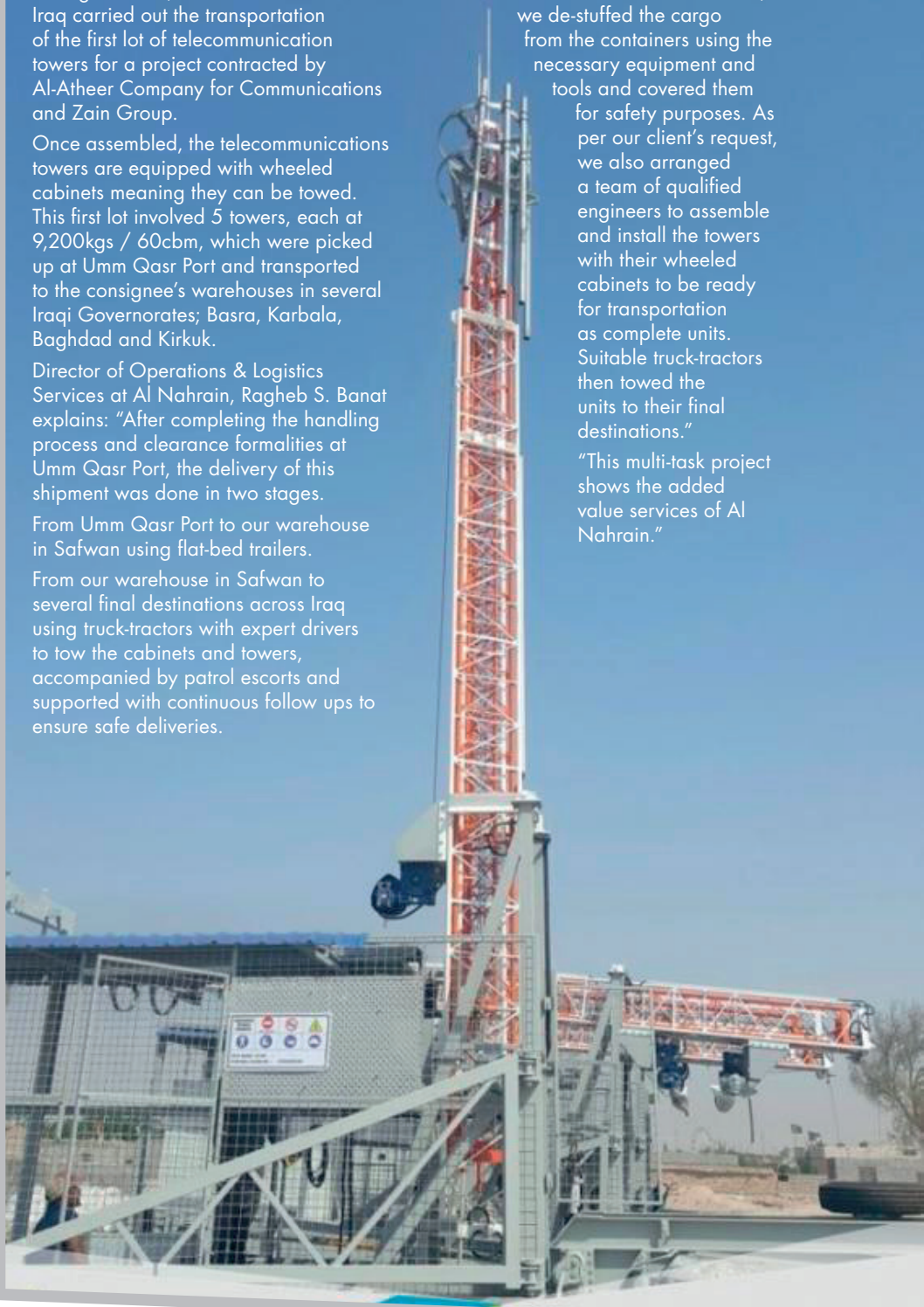
Director of Operations & Logistics Services at Al Nahrain, Ragheb S. Banat explains: "After completing the handling process and clearance formalities at Umm Qasr Port, the delivery of this shipment was done in two stages.

From Umm Qasr Port to our warehouse in Safwan using flat-bed trailers.

From our warehouse in Safwan to several final destinations across Iraq using truck-tractors with expert drivers to tow the cabinets and towers, accompanied by patrol escorts and supported with continuous follow ups to ensure safe deliveries.

At our warehouse in Safwan, we de-stuffed the cargo from the containers using the necessary equipment and tools and covered them for safety purposes. As per our client's request, we also arranged a team of qualified engineers to assemble and install the towers with their wheeled cabinets to be ready for transportation as complete units. Suitable truck-tractors then towed the units to their final destinations."

"This multi-task project shows the added value services of Al Nahrain."



MEGALIFT MALAYSIA SHARE THEIR LATEST NEWSLETTER

Malaysian members, Megalift are pleased to share their latest newsletter available to download from the online version of this story.

The newsletter features Megalift's recent projects including:

- Reactors for Petronas Rapid Package Project
- Loop reactors for Technimont HQC Project
- A fishing boat from Japan to Malaysia
- Cargo handled for Jimah East Power Plant Project

Plus, photos from the Megalift stand at the Breakbulk Southeast Asia Exhibition in Kuala Lumpur

www.megalift.com.my



EXHIBITION COLLABORATIONS SECURED EVERY MONTH

PCN proudly collaborate with many of the world's leading exhibitions including events in the oil and gas, construction, power and energy sectors. You can view all our current collaborations on our Endorsed Exhibitions page.



BRASPORTO SHIP THREE CAT TRACTORS FROM BRAZIL TO AUSTRALIA

Brasporto Logística e Assessoria Aduaneira have recently handled a shipment of three Caterpillar tractors produced in Brazil.

They were responsible for the picking up, customs, washing and international freight from Santos in Brazil to Australia.

Brasporto was chosen for this project because of their full knowledge in Ro-Ro projects and their capability to swiftly clear this kind of cargo with customs.

Brasporto are professional PCN members in Brazil.

www.brasporto.com



CF&S TRANSPORT METAL SHEETS BY RAIL

CF&S have recently transported metal sheets measuring 4m wide and 8m long by rail from Paldiski in Estonia to Uzbekistan.

The metal sheets came from Germany to Paldiski by Ro-Ro vessel before departing for Uzbekistan. Daimar Truija (Sales Director) comments: "CF&S found a solution and worked out a scheme which avoided overwidth and saved almost 50% of railage costs".

CF&S are specialised PCN members in Estonia, Latvia and Lithuania.

CF&S PRESENT THEIR OWN ROLLING STOCK AND HIGH & HEAVY TRANSPORT SERVICES

Members in Estonia, Latvia and Lithuania, CF&S are an expert international transport and logistics group established in 1997 specialising in transporting exceptional cargo by sea, road and rail. Their years of experience working on large-scale projects enable them to provide complete logistics solutions and to bring a range of different projects to successful completion.

Sales Director at CF&S Estonia, Daimar Truija would like to draw attention to the PDF presentations (accessed from the online version of this story) on their rolling stock department detailing their specialised rail platforms and boxcars and some of their recent high and heavy transport work showing their chartering, trucking, port handling and railway transport services including the 6 crane parts photographed right (each at 48tns / 20.5 x 3.2 x 3.2m) shipped on CF&S railway platforms from Paldiski in Estonia to Archangelsk, Russia.

Daimar concludes: "Please feel free to contact us for inquiries of transport via Baltics to CIS countries and vice versa. Our primary email to be used for projects is project@cfs.net."



www.cfs.net



EUROPE CARGO & LCL LOGISTIX HANDLE SHIPMENT FROM BELGIUM TO INDIA

Europe Cargo (members in Belgium) and LCL Logistix (members in India) have recently worked together to handle an OOG shipment.

The request was for ex-works from Herstal in Belgium to DAP Nagpur in India for one of Europe Cargo's Belgian shippers. General Manager of the Forwarding Department at Europe Cargo, Sven Gillemot explains: "Whilst the cargo was not heavy, 3 of the 5 cases had OOG dimensions. We picked up cargo with low-bed trailers in Herstal and stuffed the cargo in Antwerp on 2 x 40'FR containers. The shipment was booked with Hapag Lloyd from Antwerp to Nhava Sheva and on arrival, our PCN partner, LCL Logistix took over and delivered the cargo to the consignee in Nagpur. The distance from Nhava Sheva to Nagpur was around 900km."

The cargo had details as follows:

- 2 Cases - each at 4.09 x 3.29 x 2.35m / 3tns
- 1 Case - 4.30 x 2.91 x 2.50m / 520kg
- 1 Case - 3.31 x 1.76 x .098m / 630kg
- 1 Case - 2.09 x 1.55 x 0.90m / 500kg

The client was very happy with the final result with the operations and delivery running smoothly.

www.europecargo.be, www.lcllogistix.com



HLPFI ARTICLE ON OUR ONLINE TRAINING & HOW TO SIGN UP

As you know, earlier this year we invested in both professional training from Marco van Daal and a new eLearning Platform to provide Members with a comprehensive online program.

To manage a project, one needs to understand both the practical and technical aspects. In the past, training was obtained 'on the job' because suitable courses were not readily available. We feel it is a risk to think this is how it should still be done and are happy to now provide the theory, physics and principles which should be applied on the job.

HLPFI were recently invited to complete our online training course and Paul Lucas who attended our 7th Annual Summit shared his thoughts on the training, which he said was: "Affordable and delivers information that is excellent value for money. Marco's knowledge on the subject matter is evident, and he presents the information in a clear and concise manner. Having completed the modules, I can now say that my understanding of the world of heavy transport is much improved thanks to PCN".

Please visit the online version of this story, for a link, to read Paul's full article which features on page 102-103 of the Nov/Dec 2017 issue of HLPFI.

Since its launch, over 80 users have signed up for our training and although it is ideal for staff who are at the beginning of their career - senior level professionals also benefit as it encourages reflection on current practices. Marco van Daal adds "It gives me tremendous joy when experienced project and heavy lift forwarders approach me after training and say, "I have been doing this for 30 years and now I know why".

For further details see www.pcctraining.com or our online brochure – you can even watch a sample video!

The online training is available to PCN Members at a heavily reduced rate of:

- 1-2 Participants: £250 per user
- 3-5 Participants: £200 per user
- 5+ Participants: £150 per user

Please email us for the special pricing for 10+ Participants.

If you would like to enrol, please complete the form, linked to the online version of this story.

Each user receives their own personal log-in so that they can train at their own pace with no deadlines.

www.pcctraining.com



EXG SUCCESSFULLY COMPLETE CHALLENGING SHIPMENT IN INDIA

Express Global Logistics (EXG) in India have successfully carried out the port handling, customs clearance and transportation activities of an FOB shipment at Kolkata port.

The shipment originated from Shanghai and after clearance at Kolkata, had to be transported to Siliguri at a distance of 570km away. There were 5 OOG pieces, each with a weight of 47tns, totalling 235tns, and with dimensions of 29.68 x 3.05 x 3.20m. EXG also carried out a detailed route survey for the transportation to Siliguri.

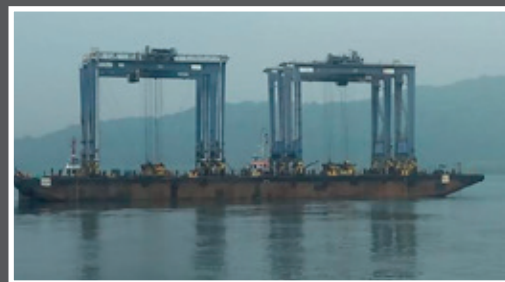
Nandit Dayal at EXG explains a challenge overcome during the transportation: "The height of the cargo along with the trailer height was 4.80m and the journey passed 3 railway crossings with a height of 4.6m. As a solution, we removed a part of the saddle fitted on the autoclave and fixed a wooden slipper matching the shape of the cargo. With this, we were able to reduce the height by 0.2m and complete the transportation as per the schedule."

Express Global Logistics are trusted PCN members and project specialists, established in 1946 with headquarters in Mumbai, India. An asset based company with a pan-India presence, EXG are backed by their own fleet of Goldhofer hydraulic axles, cranes up to 450tns and warehouses.



EXG MOVE RTG CRANES IN INDIA

EXG were awarded a challenging project to ship 4 units of rubber tyre gantry cranes (RTGCs) from Nhava Sheva to Mundra. The dimensions of 25.27 x 11.94 x 25.10m and total weight of 535tns made it difficult to achieve a proper stowage, vessel stability and the roll-on/off.



After a series of meetings with all stake holders, including the customer, port officials, marine warranty surveyors and third-party inspectors and in compliance with EXG's own QHSE standards and the customer's stringent regulations, a plan was chalked out clearly defining and describing the activities at each stage.

Nandit Dayal at EXG explains: "Firstly, the engineering team had to put their innovation skills to test to achieve the best stowage on one barge with limited space on deck. Then, it was the marine team's job to ensure sea going stability in compliance with IMO regulations for such a heavy and high center of gravity load."

EXG was faced with tidal range of over 4m at Nhava Sheva and over 6m at Mundra but the barge maintained sufficient pumps to meet these tidal variations by ballasting and de-ballasting. The roll-on and roll-off operations of the RTGCs was perfectly carried out, keeping the barge at the same level as the jetty. The gap of 3.5m between the jetty and barge was bridged by a steel ramp, designed and tested especially for the purpose.

The sea fastening was done in accordance with the cargo securing manual for the vessel and was subject to detailed discussions and requirements of the marine warranty surveyor and inspectors. The resultant plan was supported with proper calculations and in line with the weather predicted for the intended voyage. Continuous monitoring of the weather en-route and passage planning for the barge was also carefully performed to ensure the safe voyage and arrival at Mundra."

All 4 units of the RTGCs were safely handed over to the customer at Mundra after the roll-off in just two tides. Nandit concludes: "The customer's satisfaction and their words of appreciation were the best things we achieved in the entire execution of the project!"



EXG SUCCESSFULLY COMPLETE HANDLING OF AUTOCLAVES

Express Global Logistics (EXG) are members in India and have successfully carried out the port handling, customs clearance and transportation activities of autoclaves at Mumbai port.

The cargo originated from Shanghai and after clearance, had to be transported to Lucknow at a distance of 1,450km away. There were 4 identical pieces, each with a

weight of 38tns (total weight of 152 tons) and with dimensions of 34 x 2.85 x 2.68m.

EXG carried out a route survey for the long transportation to Lucknow and as the journey passed through 4 states, permission had to be obtained from each state for the movement of the cargo. A road was constructed to get a suitable entry into the factory.



The entire operation was carried out smoothly and safely without any issues.

Express Global Logistics are project specialists, established in 1946 with headquarters in Mumbai, India. An asset based company with a pan-India presence, EXG are backed by their own fleet of Goldhofer hydraulic axles, cranes up to 450tns and warehouses.

www.expressworld.com



EXG SUCCESSFULLY MOVE BRICK MANUFACTURING PRESS

Express Global Logistics (EXG) are members in India and have successfully carried out the movement of a brick manufacturing press from Shanghai in China to Siliguri. The cargo was brought to Mumbai Port and transported from there to Siliguri by truck. The dimensions of the press are 3.03 x 1.67 x 6.78m with a weight of 65mt.

Nandit Dayal at EXG comments: "We faced a challenge at the origin in Shanghai due to the height of the cargo which meant that we had to lift the roof of the factory to perform the loading onto the truck. The transportation from Mumbai to Siliguri was a total distance of 2,350km and we selected the shortest and fastest route".

EXG completed the entire movement smoothly and as scheduled and provided complete tracking of the vehicle during transportation.

Express Global Logistics (EXG) are project specialists, established in 1946 with headquarters in Mumbai, India. An asset based company with a pan-India presence, EXG are backed by their own fleet of Goldhofer hydraulic axles, cranes up to 450tns and warehouses.

www.expressworld.com

DC LOGISTICS RECOGNISED AT THE 2017 INFRAERO'S LOGISTICS EFFICIENCY AWARDS



Members in Brazil, DC Logistics have received 6 awards at the 2017 Infraero's Logistics Efficiency Awards 2017 held the Centro de Eventos da Federação das Indústrias in the State of Paraná.

Managing Director, Guilherme Mafrá: "The evening of November 29th gave recognition for DC Logistics Brasil! These 6 awards mean we now have a total of 20 trophies in our history from the Infraero Awards which is very respected in the logistics sector. The awards consolidate the performance of DC Logistics in different types of cargo and business sectors and the recognition of the tireless work of our team, that always strives for excellence, serves as a motivation to continue in the quest to always make it better."

To become winners, Infraero defines the companies that use the transportation services the most and these companies indicate the cargo agencies. Among the criteria required are clearance time of cargo, transport within standards, efficient operations and applied logistics. "The timing of the logistics process is monitored and ranked from the arrival of the cargo at the Infraero terminals until delivery to the importer or its legal representative," explains Guilherme.

With ten offices in the country, DC Logistics Brasil has been working at innovative and optimised logistics solutions for 23 years. They offer agility and local experience for both national and international logistics.

The DC Logistics Brasil Infraero's Logistics Efficiency Awards for 2017 were:

- Featured Freight Forwarder
- Equipment & Instruments Medical/Pharmaceutical - Nominated by Prati Donaduzzi
- Diverse Goods – Nominated by Comércio e Representações NMP
- Technology – Nominated by Intelbras
- Textile – Nominated by Tecnoblu
- Metal/Mechanical - Nominated by Fábio Perini

Other Infraero's Logistics Efficiency Awards previously won by DC Logistics Brasil include:

- **2017:** Won as Freight Forwarder for Special Customs Operations for the commodity Electronics.
- **2016:** Featured Freight Forwarder and the winner in the Textile, Metal/Mechanical, Chemicals and Equipment & Instruments Medical/Pharmaceutical segments.
- **2015:** Featured Freight Forwarder and won in the categories; Textile, Metal/Mechanical, Equipment & Instruments Medical/Pharmaceutical and Diverse Goods.
- **2014:** Awarded in the Equipment & Instruments Medical/Pharmaceutical segment.

www.dclogisticsbrasil.com



ANNUAL AWARD CEREMONY

The Annual Award Ceremony was presented by Rachel who said: "to ensure the awards are fair to the smaller markets, the results are calculated using a ratio of how highly each company scored against the number of companies they work with from our 2017 Quality Control Survey."

- 2017 *International Member of the Year:*
Convoy Logistics Providers (Canada)
- 2017 *Regional Award: Middle East & Africa:*
First Global Logistics (Egypt)
- 2017 *Regional Award: The Americas:*
Canaan Shipping Co Ltd (Canada)
- 2017 *Regional Award: Asia & Pacific:*
Sadleirs Global Logistics (Australia)
- 2017 *Regional Award: Europe:* **Europe Cargo bvba (Belgium)**
- 2017 *President's Award:*
Anker Logistica y Carga SAS (Colombia)

SUMMARY OF 7TH ANNUAL SUMMIT HELD IN PRAGUE

Over 185 CEO's and Senior Managers from more than 80 countries collectively traveled over 267,000 miles to attend our 7th Annual Summit in Prague from 19-21 November 2017.

Guests were warmly welcomed at a Welcome Reception which was followed by a Gala Dinner with entertainment by a Cymbalo band using traditional folk instruments to perform arrangements of modern songs. A fun Twitter Competition with special PCN selfie sticks and props

ensured lots of smiles.

PCN President, Rachel Humphrey officially opened the event and a video was shown regarding both the organisation and details about the meeting. Various membership incentives were then highlighted including a new Staff Exchange Program and eLearning Platform, as featured on page 19 and 102 respectively in the Nov/Dec 2017 issue of HLPFI.

This years Guest Speaker was Mr Kollatt Muhajiz, Key Accounts and Business Development Manager for Break Bulk & Heavy Lift cargo at the newly centralized CMA-CGM Project Cargo Division in Marseille. Kollatt oversees all Ports and Terminal activities for operations and procurement of break bulk handling and the presentation covered the structure of CMA CGM Project Cargo division with examples of various bookings carried on their vessels including the heaviest containerized breakbulk piece at 457mt.

Over the 2-day gathering, more than 2230 individual business meetings took place. During these important sessions, delegates exchanged information and investigated possible collaborations together. These crucial meetings provide an opportunity to review current and upcoming government and private projects in the manufacturing, oil and gas, infrastructure, construction, power and energy sectors among others.

An evening dinner excursion was enjoyed at Kolkovna Celnice, a local restaurant that accentuates the pride in the long and famous tradition of Czech beer brewing. Owned by the Pilsner brewery, the venue is decorated with period photos and brewing equipment. Live music added to the relaxed atmosphere after a busy day in the meeting room.





During the registration process, funds were raised for the Child Refugee Crisis Appeal run by Save the Children. An additional donation by Special Guests, HLPFI and a very generous gesture by our Twitter Competition winner, Patrick Lo of Canaan Shipping whereby he kindly donated his 1st prize of an Annual Fee (worth £1050) to our fundraising campaign brought our total to £3450. The donation will help towards working with child refugees around the world - from Lebanon to Jordan, Greece to Finland. Keeping children warm by providing warm clothes, blankets and fuel for heating. The charity also distribute food, water, blankets and tents to refugee families.

At the end of the meeting, Rachel said: "We could not have wished for a better event, and it really inspires us at the PCN Head Office to see our Members working so hard during the gathering. It was wonderful to welcome so many new faces and the gathering shows that PCN continues to be a highly active and connected community of heavy lift and project forwarders who want to discuss current and future challenges, share knowledge, network and develop relations. We will endeavor to continue to provide the right platforms to do this and to maintain our high calibre of membership. We'd also like to say a huge thank you to our Guest Speaker, Mr Kollatt Muhajiz and Special Guests, Paul Lucas and Mike Hayes of HLPFI."



COSTA RICA

8TH ANNUAL SUMMIT

18-20 NOVEMBER 2018



We have selected Costa Rica, at the heart of the Americas for our **8th Annual Summit**. Bordering Nicaragua and Panama by land and Colombia and Ecuador by sea, Costa Rica has an open economy focused on industrial production, tourism and agriculture and is currently investing over £650 million for major improvements to seaports, airports and highways.

Our event will take place from **18-20 November 2018** at the InterContinental Real **San José**, located just 20 minutes from Juan Santamaría International Airport (SJO).

Our venue is in the heart of Escazu, San Jose's exclusive neighbourhood and within the Multiplaza Mall complex, just a few steps away from the finest restaurants, bars and upscale shops.

We recommend that our guests attach sales calls either side of the meeting to gain maximum benefits of the trip to the Americas and further details of an optional visit to the Panama Canal will be announced in due course.

Please see our website for full details.

SUN 18 NOV 2018

10:00 - 13:00
San José City Tour
19:00 - 22:00
Gala Dinner

MON 19 NOV 2018

09:30 - 17:30
Official Meeting
19:00 - 22:00
Dinner at Tiquicia

TUE 20 NOV 2018

09:30 - 17:30
Official Meeting





WSS PROJECT TEAM HANDLES MOVEMENT OF DELICATE PACKAGING MACHINE

The project team at Wilhelmsen Ships Service (WSS) have recently handled the movement of a delicate teabag packaging machine plus its accessories in the UAE.

The scope of work included:

- Survey of the machine at its location inside the operational factory to recommend a transfer route for shifting, exit door, loading ramps, the truck route to the Wilhelmsen warehouse, offloading ramp, and the storage & packing location in the warehouse
- Liaising with the factory's HSSE, technical and production teams, shifting crew and transportation team to shift the machine safely within the allotted time
- Shifting the machine using pallet trolleys, caster rollers & supporting beams
- Receiving the machine from the factory loading ramp, transporting the machine to the Wilhelmsen warehouse and offloading using a hydraulic truck
- Shifting the machine to the warehouse packing location and performing the packing & crating
- Liaising with customs authorities for processing Free Zone transit out Bill of Entry
- Loading the packed machine & accessories on a cross-border truck
- Processing Free Zone transit out export documentation along with Certificate of Origin
- Processing customs & Criminal Investigation Department inspection and clearance

Wilhelmsen once again ensured the proper coordination between all parties for the timely movement of the shipment.

WSS SUPPORTS MAJOR REFINERY EXPANSION PROJECT IN OMAN

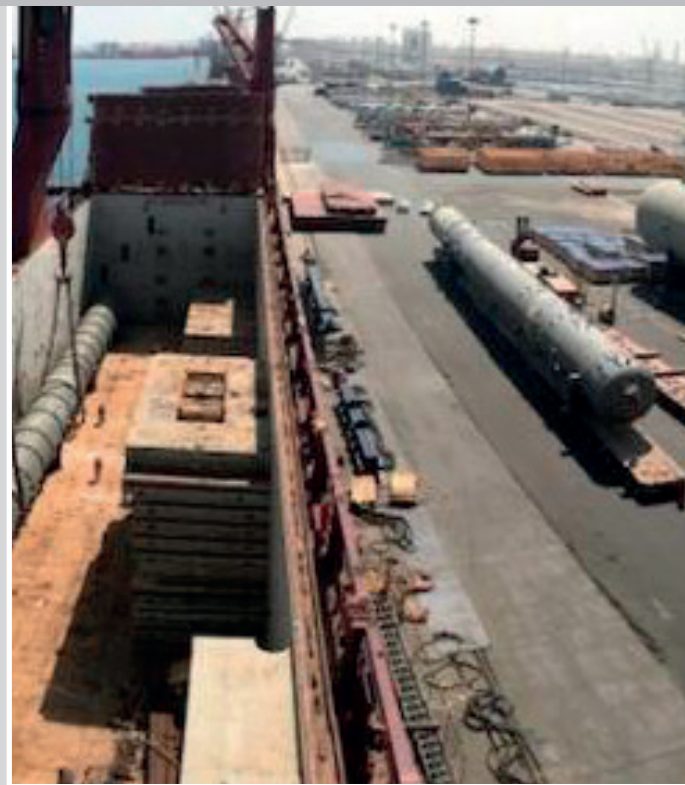
The Wilhelmsen Ships Services (WSS) team have been called upon to support one of the largest refinery expansion projects currently ongoing in Oman. The majority of the cargo handled was heavy and super-heavy sizes ranging from single piece weights of up to 576mtns and lengths of up to 76m.

Pranav Dave (Ships Agency Manager) comments: "Such complicated operations call for a special skillset, extensive handling experience, an adept team with an eye for details, strong local connections and a proven track record of delivering sustained value to stakeholders with high focus on safety. For over 30 years in Oman, this is what the Wilhelmsen team is known for. To passionately serve national interests by handling infrastructure development project cargo with expertise in various sensitive and complicated operations."

WSS was involved in the port and vessel operations providing a sustainable solution to the carrier and receiver clients including project pre-planning, terminal engagement, discharge sequences, documentation and shore arrangements. As of November 2017, a total of 90,000cbm of OOG and project cargo across 5 ships has been successfully delivered at the port with more to come.

Pranav concludes: "WSS reciprocates the ongoing support from the terminal, consignees and project stakeholders."

www.wilhelmsen.com





INNOVATIVE & PROACTIVE SOLUTIONS AT OFFSHORE GLOBAL LOGISTICS

We are pleased to approve Offshore Global Logistics Ltd as new members in Kenya. The company's office and warehouse are located in Nairobi and they have a successful experience in project cargo.

Nicholas Kaluma (Managing Director) states they are joining PCN as: "...we were looking for a strong network that will help us in our project cargo and heavy lift business. We believe PCN will enable us to strengthen our business by reaching across all continents and by providing our specialised services to members. Offshore Global Logistics is a logistics and supply chain firm fully capable in project cargo and heavy lift whose operations span across the East African region. We pride ourselves in being at the forefront of end-to-end supply chain solutions through providing innovative, proactive & cost-effective services."

Please visit the online version of this story, to download a case study of a recent project handled by Offshore Global Logistics for a new metal works plant.



www.offshorelogistics.co.ke



06-07 February 2018
Abu Dhabi National Exhibition Centre

**THE ONLY MIDDLE EAST EVENT
DEDICATED TO THE PROJECT CARGO
AND BREAKBULK INDUSTRY.**

Breakbulk MIDDLE EAST

To exhibit, sponsor and register, visit
www.breakbulk.com/bbme2018

www.cargoconnections.net



15 years after starting her first company (Universal Freight Organisation) and to complete her trio of networks, Rachel Humphrey launched **Cargo Connections**, a general cargo network offering a Restricted Representation policy.

The organisation now contains over 100 Members and our 3rd Annual Assembly takes place in March 2018 in Prague.




One Mega Event



2nd BUILDINGS
India 2018 Expo



4th Smart Cities
India 2018 Expo

3rd TRANSPORT
India 2018 Expo



3rd SOLAR
India 2018 Expo



5th WATER
India 2018 Expo

23-25 May 2018
Pragati Maidan, New Delhi

C.H. ROBINSON & PROCAM DELIVER TO SOUTH KOREA



The C.H. Robinson Project Logistics team with the assistance of Procam Logistics has helped a customer arrange the ocean transport of breakbulk and containerised cargo from multiple locations to Daesan Port in Jungang-dong, Busan, South Korea.

The cargo was shipped from China, India and the USA on three charters with a combined load of 773mtn / 6,932cbm and loading taking place day and night. C.H. Robinson worked with fellow PCN member in India, Procam Logistics to execute the move. The entire project and the safe delivery at Daesan Port went according to plan, other than a momentary halt in operations due to thick fog.

A total of 1,000mtn / 8,000cbm of equipment was successfully delivered over a period of five months.

www.chrprojectlogistics.com
www.procamlogistics.com

C.H. ROBINSON DELIVER 49 COMPLETE WIND TURBINES

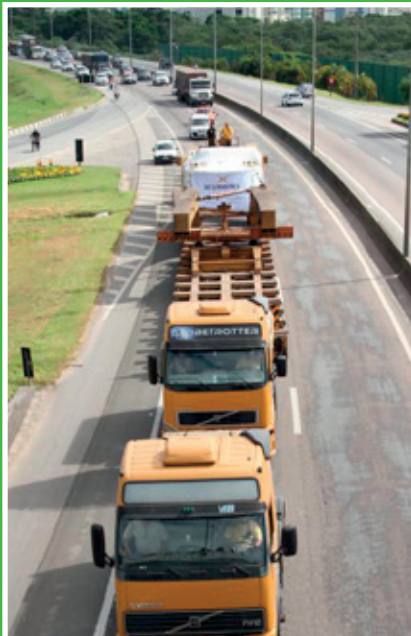
C.H. Robinson Project Logistics were thrilled to assist their client with the delivery of 49 complete wind turbines to a site near Bluff Point in Indiana, USA.

The project required 476 truckloads to transport the towers, nacelles and 147 blades at 56.9 x 3.94 x 2.9m and 11.5mtns each. The total cargo moved from the ports of Monroe and Garden City was 15,868mtns and 173,000cbm.

Corinne Silbernagel at C.H. Robinson comments: "Due to planned and emergency road construction in various states, our wind specialists were required to develop an alternate conveyance. We worked closely with the various state departments of transportation in order to accommodate delivery. The entire project, which was Free on Truck (FOT) origins to FOT site, was completed in 7 weeks."

www.chrprojectlogistics.com





24 YEARS OF PROJECT CARGO & HEAVY SHIPMENTS AT DC LOGISTICS

We are pleased to introduce DC Logistics Brasil as new members. They have exceptional coverage throughout Brazil with 10 offices in Itajaí (Head Office), Curitiba, São Paulo, Porto Alegre, Manaus, Campinas, Vitória, Rio de Janeiro, Belo Horizonte and Recife. The company were recommended for membership by three current PCN partners.

Guilherme Antonio Mafra, Managing Director of DC Logistics Brasil, attended the 2017 Annual Summit that took place in Prague on 19-21 November.

Guilherme states: "DC Logistics was founded in 1994 and employs over 195 people within 10 offices across Brazil. Our company is ISO 9001:2015 certified and offers complete project cargo, heavy lift, logistics, customs brokerage and freight forwarding services. During our 24 years of service, we have handled numerous heavy lift and project cargo shipments with a special department exclusively dedicated to promoting and handling these kinds of shipments to, from and via Brazil."

"In special project cargo and heavy lift operations, being able to rely on DC Logistics makes a difference. Our expert team is exclusively dedicated to offering project cargo services and carrying special loads and we focus on analysing every detail in the process to ensure a smooth operation and to minimise risks.

We also have excellent relationships for negotiations with national terminals for special discharges. Our varied and extensive experience has included machinery, production lines, large and medium sized boats, rolling units (cranes and trucks), energy, automotive, aerospace, mining, electronics as well as many other cargos requiring special handling and customs procedures."

Two examples of projects handled by DC Logistics Brasil are outlined here.

www.dcllogisticsbrasil.com



CERAMIC TILE PRESS PROJECT

The important project was handled by DC Logistics for Portobello SA, a major ceramic company in Brazil.

- **Port of Loading:** Ravenna, Italy
- **Port of Discharge:** Itajaí, Brazil
- **Delivery:** Tijucas, SC Brazil
- **Modal:** Breakbulk
- **Commodity:** New press for the ceramic tile industry
- **Measurements:** 1 piece @ 6.76 x 3.61 x 2.43m (106tns) and 1 piece @ 7.71 x 3.75 x 2.90m (155tns) plus 45 smaller loose pieces

Trade Lane Development Manager, Gustavo Valmorbidia comments: "We chartered a vessel for the 47 pieces and as soon as the cargo had left Ravenna, we applied for road permits in Brazil as this can take around 20 days to be approved. Due to this, all was in order once the vessel had berthed at Itajaí Port, avoiding high storage charges. The 2 heavy pieces listed above were unloaded using 2 mobile harbour cranes for safety reasons directly onto 10 and 12 axles trailers to avoid extra handling and reduce damage risks. Due to the weight and size, the larger piece weighing 155tns was transported in the city with 12 axles only, but for the highways, more axles were used to distribute the weight, so we used 2 heavy-duty modular trailers plus a girder trailer."

YACHT PROJECT

One of many shipments DC Logistics has handled for Azimut Yachts is detailed as follows.

- **Pick Up:** Viareggio, Italy
- **Port of Loading:** Genoa, Italy
- **Port of Discharge:** Itajaí, Brazil
- **Delivery:** Itajaí, SC Brazil
- **Modal:** Breakbulk
- **Commodity:** 95' yacht with hull on cradle
- **Measurements:** 28.62 x 6.94 x 8.20m (65tns)

Gustavo explains: "We used a tug to move the hull from the shipper's site in Viareggio to Genoa Port as the cargo didn't have a motor. The cradle was assembled on board a charter vessel at the Port of Loading and the hull was loaded directly from the water. The shipyard is very close to Itajaí Port so the cargo was unloaded with the cradle directly onto a special trailer which is used by the client at their site where the yacht was finished. All the operations were followed by our expert surveyors from door-to-door."



www.foodlogisticsindia.com

International Exhibition on Logistics,
Transportation and Warehousing
for Food & Drink Industry

September 27-29, 2018
Bombay Convention & Exhibition Centre,
Goregaon (E), Mumbai



Concurrent Events:



Koelnmesse YA Tradefair Pvt. Ltd.
Krunal Goda
Tel: +91 22 28715207
k.goda@koelnmesse-india.com



An International Exhibition of Oil & Gas and Petrochemical Technologies, Equipment & Supporting Industries



OGAB
Brunei International Oil and Gas Technology
& Equipment Exhibition **2018**

10-11
OCTOBER 2018
Pusat Insani
Community Hall
Seria, Brunei

www.bruneioilgas.com

For booking and more information, please contact:
+65 - 6100 9101 (Singapore) sg@asiafireworks.com
+603 - 7493 5943 (Malaysia) nicolle@asiafireworks.com

Organized by:



PROJECT
CARGO
NETWORK

Registered in the UK. Company no 7334156.
ISO 9001 Reg No 204480; ISO 14001 Reg No 205343

WWW.PROJECTCARGONETWORK.COM